

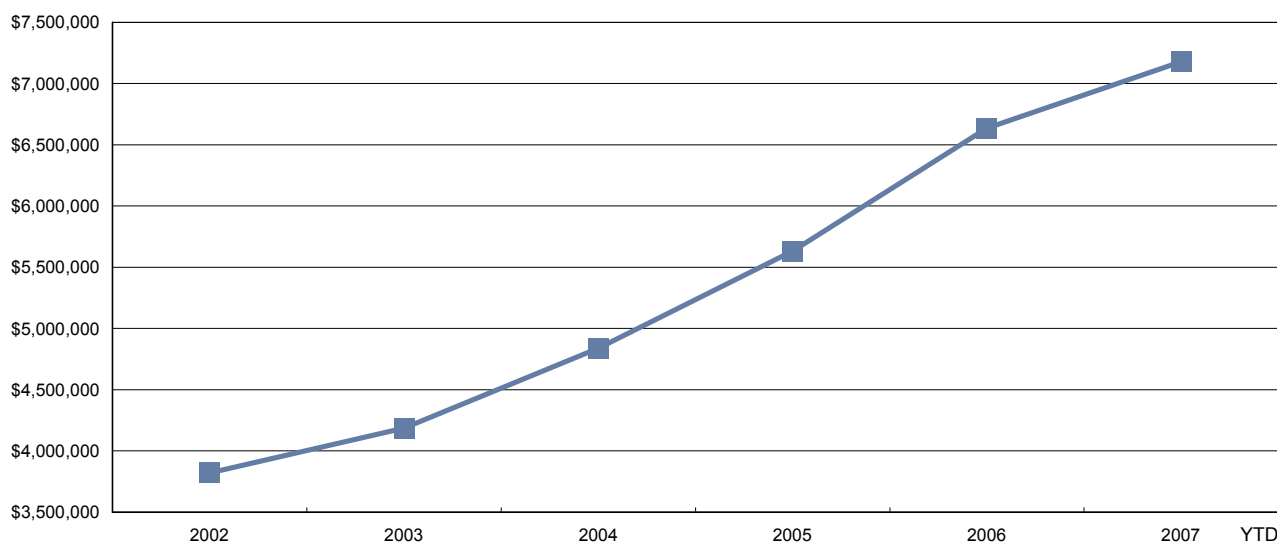
Group of Industries Synopsis

This report is currently only available for the Petroleum Safety Council and shows the combined claims and financial history of all companies belonging to this group of industries.

Insurable Earnings and Premiums – for Years: 2002 to 2007

| Rate Year | Number of Employers with Insurable Earnings | Newly Opened Accounts | Total Insurable Earnings | Total Workers | Total Premium |
|-----------|---|-----------------------|--------------------------|---------------|---------------|
| 2002 | 9,449 | 665 | \$3,820,735,621 | 96,324 | \$52,413,264 |
| 2003 | 10,364 | 1,041 | \$4,185,887,059 | 102,265 | \$80,063,024 |
| 2004 | 11,608 | 1,399 | \$4,839,051,909 | 115,623 | \$90,531,285 |
| 2005 | 13,355 | 2,083 | \$5,631,957,314 | 129,385 | \$95,848,536 |
| 2006 | 14,961 | 2,179 | \$6,635,735,420 | 140,613 | \$98,307,891 |
| 2007 YTD | 14,539 | 895 | \$7,177,703,735 | 168,953 | \$95,952,009 |

Total Insurable Earnings (\$Thousands)



Distribution of Accounts By Insurable Earnings (\$Thousands*)

| Rate Year | <= \$500,000 | | > \$500,000 and <= \$1 Million | | > \$1 Million and <= \$5 Million | | > \$5 Million and <= \$20 Million | | > \$20 Million | |
|-----------|--------------|---------------|--------------------------------|---------------|----------------------------------|---------------|-----------------------------------|---------------|----------------|---------------|
| | Accts | Tot Ins Earn* | Accts | Tot Ins Earn* | Accts | Tot Ins Earn* | Accts | Tot Ins Earn* | Accts | Tot Ins Earn* |
| 2002 | 8,785 | \$489,558 | 278 | \$195,562 | 263 | \$551,756 | 84 | \$737,068 | 39 | \$1,846,793 |
| 2003 | 9,621 | \$528,845 | 310 | \$214,627 | 305 | \$637,648 | 90 | \$767,829 | 38 | \$2,036,938 |
| 2004 | 10,788 | \$586,949 | 340 | \$241,032 | 339 | \$697,587 | 101 | \$948,230 | 40 | \$2,365,253 |
| 2005 | 12,424 | \$662,678 | 377 | \$267,472 | 394 | \$821,059 | 116 | \$1,113,216 | 44 | \$2,767,533 |
| 2006 | 13,906 | \$774,445 | 414 | \$294,482 | 460 | \$972,147 | 124 | \$1,204,401 | 57 | \$3,390,260 |
| 2007 YTD | 13,457 | \$819,550 | 416 | \$295,776 | 474 | \$960,222 | 129 | \$1,244,220 | 63 | \$3,857,936 |

Note: The current year insurable earnings is based on estimates

Group of Industries Synopsis

(Based On Industry)

Claim Costs – for Years: 2002 to 2007

Total Claims

| Accident Year | Number of Claims | Claim Costs | Number of LTC Claims | Total LTC Claim Costs | TTD Days | Modified Work Claims | Medical Aid Claims | Disabling Injury Claims |
|---------------|------------------|--------------|----------------------|-----------------------|----------|----------------------|--------------------|-------------------------|
| 2002 | 3,013 | \$12,544,066 | 1,034 | \$11,483,085 | 51,070 | n/a | 1,979 | n/a |
| 2003 | 4,163 | \$15,967,586 | 1,340 | \$14,410,113 | 58,891 | n/a | 2,823 | n/a |
| 2004 | 4,250 | \$15,364,884 | 1,201 | \$13,482,322 | 46,511 | 2581 | 3,049 | 3304 |
| 2005 | 5,398 | \$17,483,762 | 1,456 | \$15,000,338 | 52,824 | 3477 | 3,942 | 4309 |
| 2006 | 5,472 | \$20,382,948 | 1,410 | \$17,753,577 | 51,185 | 3645 | 4,062 | 4377 |
| 2007 YTD | 1,993 | \$3,910,201 | 480 | \$3,058,089 | 11,870 | 1366 | 1,513 | 1607 |

Duration Bands - Total LTC Claims

| Accident Year | <= 5 Days | > 5 Days and <= 8 Days | > 8 Days and <= 30 Days | > 30 Days and <= 60 Days | > 60 Days | Total Lost Time Claims |
|---------------|-----------|------------------------|-------------------------|--------------------------|-----------|------------------------|
| 2002 | 255 | 93 | 264 | 167 | 255 | 1,034 |
| 2003 | 414 | 109 | 318 | 188 | 311 | 1,340 |
| 2004 | 356 | 87 | 315 | 196 | 247 | 1,201 |
| 2005 | 485 | 112 | 369 | 206 | 284 | 1,456 |
| 2006 | 433 | 115 | 379 | 195 | 288 | 1,410 |
| 2007 YTD | 163 | 52 | 134 | 61 | 70 | 480 |

Total Claims Costs

| Accident Year | Compensation | Medical Aid | Rehabilitation | Economic Loss | Total |
|---------------|--------------|-------------|----------------|---------------|--------------|
| 2002 | \$5,729,628 | \$4,028,986 | \$226,223 | \$2,559,230 | \$12,544,066 |
| 2003 | \$7,247,534 | \$6,672,354 | \$289,837 | \$1,757,860 | \$15,967,586 |
| 2004 | \$6,581,063 | \$6,712,610 | \$381,131 | \$1,690,080 | \$15,364,884 |
| 2005 | \$7,483,168 | \$8,104,594 | \$292,099 | \$1,603,900 | \$17,483,762 |
| 2006 | \$7,568,549 | \$8,861,865 | \$516,975 | \$3,435,559 | \$20,382,948 |
| 2007 YTD | \$1,771,412 | \$2,129,253 | \$9,536 | \$0 | \$3,910,201 |

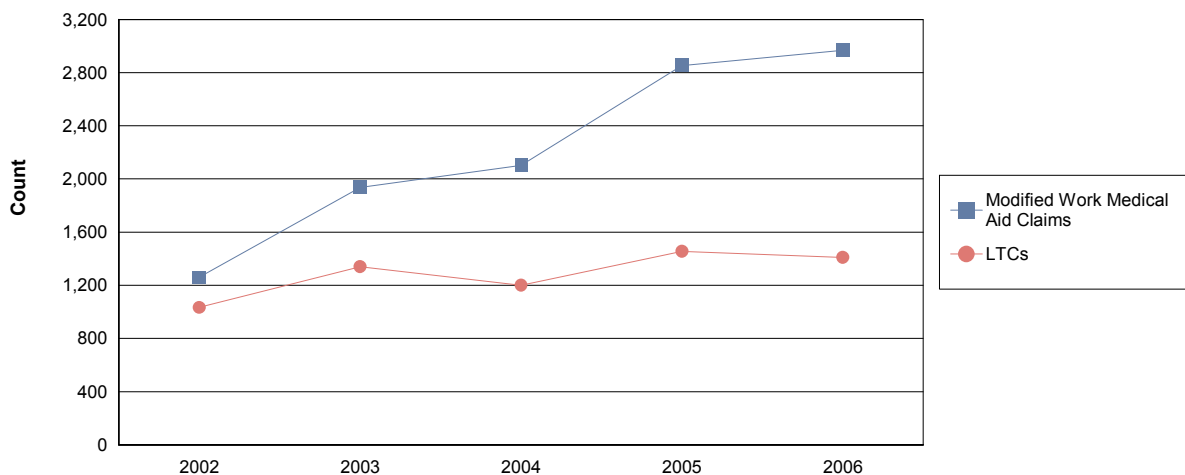
Most Expensive Lost Time Claims Analysis

| Accident Year | LTC's > \$25,000 | Percentage > \$25,000 | Total Cost of LTC's > \$25,000 | Percentage of Total Costs |
|---------------|------------------|-----------------------|--------------------------------|---------------------------|
| 2002 | 112 | 10.8% | \$6,732,317 | 58.6% |
| 2003 | 151 | 11.3% | \$8,050,036 | 55.9% |
| 2004 | 120 | 10.0% | \$7,421,778 | 55.0% |
| 2005 | 147 | 10.1% | \$7,889,732 | 52.6% |
| 2006 | 151 | 10.7% | \$10,466,651 | 59.0% |
| 2007 YTD | 11 | 2.3% | \$524,552 | 17.2% |

(Based On Industry)

Claim Costs – for Years: 2002 to 2006

Disabling Claims Components

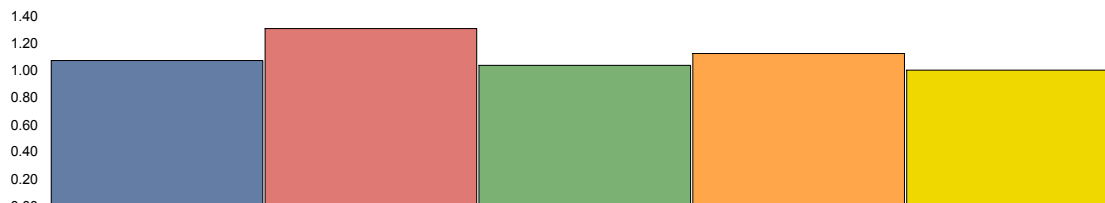


Disabling Claims include Lost Time Claims or Medical Aid Claims with Modified Work

(Based On Industry)

Claim Costs – for Years: 2002 to 2006

Frequency Rates (Lost Time Claims per 100 workers)

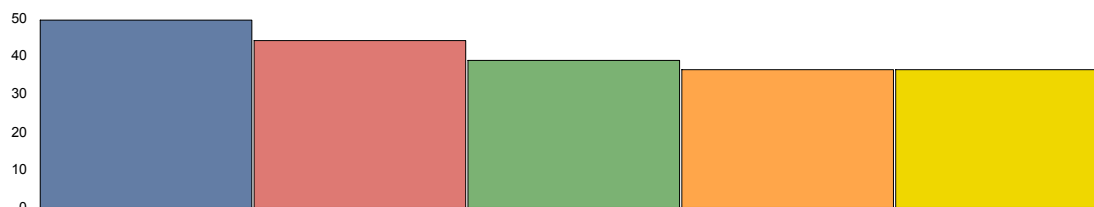


| | 2002 | 2003 | 2004 | 2005 | 2006 |
|----------------|------|------|------|------|------|
| Frequency Rate | 1.07 | 1.31 | 1.04 | 1.13 | 1.00 |

Frequency Rate = (Total Lost Time Claims * 100) / (Person Years)

Person Years = (Total Insurable Earnings) / (Avg Hourly Wage * 2000 Hours)

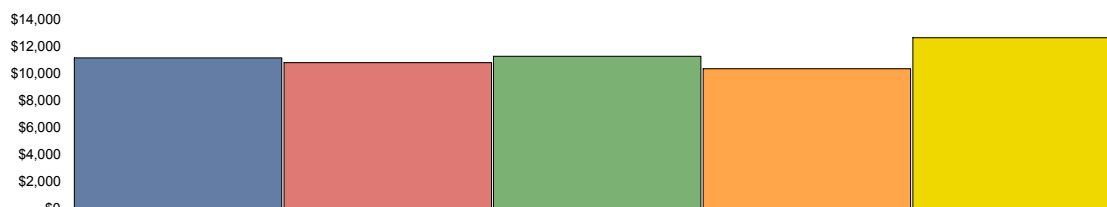
Severity Rates (Temporary Total Disability Days per Lost Time Claim)



| | 2002 | 2003 | 2004 | 2005 | 2006 |
|---------------|-------|-------|-------|-------|-------|
| Severity Rate | 49.39 | 43.95 | 38.73 | 36.28 | 36.30 |

Severity Rate = (Total TTD's) / (Total LTCs)

Average Cost Per LTC



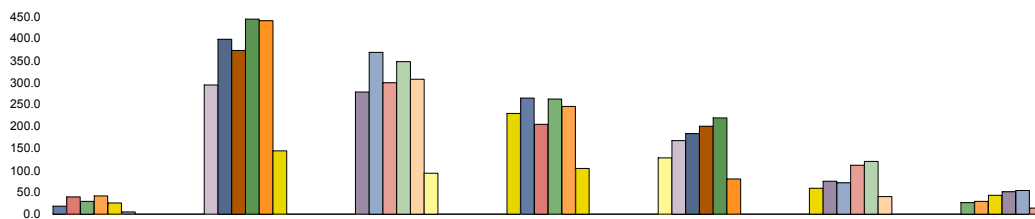
| | 2002 | 2003 | 2004 | 2005 | 2006 |
|------------------|-------------|-------------|-------------|-------------|-------------|
| Avg Cost / Claim | \$11,105.50 | \$10,753.82 | \$11,225.91 | \$10,302.43 | \$12,591.19 |

Average Cost Per LTC = (Total LTC Costs) / (Total LTCs)

(Based On Industry)

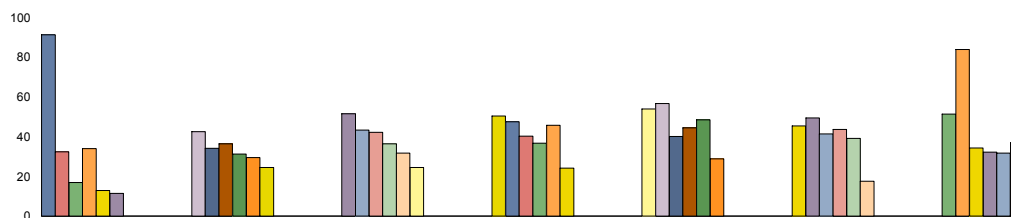
Injured Worker's Age – for Years: 2002 to 2007

Number of LTC's (by age of injured worker and by occurrence year)



| | Under 19 | 19 to 26 | 27 to 34 | 35 to 42 | 43 to 50 | 51 to 58 | over 58 |
|-----------------|----------|----------|----------|----------|----------|----------|---------|
| 2002 | 18 | 294 | 278 | 229 | 128 | 59 | 26 |
| 2003 | 39 | 398 | 368 | 264 | 167 | 75 | 29 |
| 2004 | 29 | 372 | 299 | 204 | 183 | 71 | 43 |
| 2005 | 41 | 444 | 347 | 262 | 200 | 111 | 51 |
| 2006 | 25 | 440 | 307 | 245 | 219 | 120 | 54 |
| 2007 YTD | 5 | 144 | 93 | 104 | 80 | 40 | 14 |

Average Severity of a Claim Temporary Total Disability Days per Lost Time Claim (by age of injured worker and by occurrence year)



| | Under 19 | 19 to 26 | 27 to 34 | 35 to 42 | 43 to 50 | 51 to 58 | over 58 |
|-----------------|----------|----------|----------|----------|----------|----------|---------|
| 2002 | 91.28 | 42.45 | 51.46 | 50.32 | 53.85 | 45.42 | 51.35 |
| 2003 | 32.38 | 34.04 | 43.36 | 47.46 | 56.65 | 49.36 | 83.90 |
| 2004 | 16.90 | 36.30 | 42.10 | 40.19 | 40.02 | 41.37 | 34.26 |
| 2005 | 33.98 | 31.24 | 36.37 | 36.62 | 44.34 | 43.57 | 32.14 |
| 2006 | 12.76 | 29.48 | 31.62 | 45.69 | 48.38 | 39.10 | 31.65 |
| 2007 YTD | 11.40 | 24.43 | 24.41 | 24.17 | 28.73 | 17.45 | 36.79 |

Note: LTC's with no birth date recorded are not included in band subtotals.

Group of Industries Synopsis

(Based On Industry)

Top 5 Comparison – for Years: 2002 to 2007

Type of Accident

Top 5 by Total LTC's

| Type of Accident | 2002 | 2003 | 2004 | 2005 | 2006 | 2007 | YTD | Totals |
|------------------------------------|------|------|------|------|------|------|-----|--------|
| Falls | 171 | 263 | 230 | 305 | 268 | | 104 | 1,341 |
| Struck by Object | 158 | 225 | 190 | 231 | 205 | | 64 | 1,073 |
| Overexertion | 148 | 182 | 179 | 199 | 206 | | 63 | 977 |
| Contact with Objects and Equipment | 93 | 131 | 113 | 131 | 130 | | 46 | 644 |
| Bodily Reaction and Exertion | 84 | 116 | 99 | 126 | 128 | | 50 | 603 |

| Type of Accident | Total LTC's (2002 to date) | Percentage of LTC's | Average Duration | Total TTD | Average LTC Costs | Total LTC Costs |
|------------------------------------|----------------------------|---------------------|------------------|----------------|-------------------|---------------------|
| Falls | 1,341 | 19.4% | 46.0 | 61,707 | \$10,526 | \$14,115,997 |
| Struck by Object | 1,073 | 15.5% | 41.0 | 44,041 | \$10,757 | \$11,542,429 |
| Overexertion | 977 | 14.1% | 35.3 | 34,515 | \$7,151 | \$6,986,527 |
| Contact with Objects and Equipment | 644 | 9.3% | 40.1 | 25,802 | \$12,611 | \$8,121,261 |
| Bodily Reaction and Exertion | 603 | 8.7% | 34.4 | 20,752 | \$7,135 | \$4,302,700 |
| All Others | 2,283 | 33.0% | 37.5 | 85,534 | \$13,193 | \$30,118,609 |
| Totals: | 6,921 | 100.0% | 39.4 | 272,351 | \$10,864 | \$75,187,522 |

Part of Body

Top 5 by Total LTC's

| Part of Body | 2002 | 2003 | 2004 | 2005 | 2006 | 2007 | YTD | Totals |
|--------------------------|------|------|------|------|------|------|-----|--------|
| Back | 218 | 282 | 259 | 301 | 271 | | 97 | 1,428 |
| Foot(Feet)/Ank(s)/Toe(s) | 125 | 147 | 136 | 170 | 167 | | 57 | 802 |
| Fingers | 108 | 128 | 99 | 120 | 111 | | 46 | 612 |
| Trunk | 99 | 107 | 114 | 117 | 120 | | 40 | 597 |
| Multiple Parts | 95 | 118 | 95 | 113 | 130 | | 45 | 596 |

| Part of Body | Total LTC's (2002 to date) | Percentage of LTC's | Average Duration | Total TTD | Average LTC Costs | Total LTC Costs |
|--------------------------|----------------------------|---------------------|------------------|----------------|-------------------|---------------------|
| Back | 1,428 | 20.6% | 32.2 | 46,024 | \$7,765 | \$11,088,121 |
| Foot(Feet)/Ank(s)/Toe(s) | 802 | 11.6% | 37.0 | 29,640 | \$7,541 | \$6,047,648 |
| Fingers | 612 | 8.8% | 29.7 | 18,170 | \$7,624 | \$4,666,163 |
| Trunk | 597 | 8.6% | 49.5 | 29,532 | \$12,336 | \$7,364,540 |
| Multiple Parts | 596 | 8.6% | 43.7 | 26,022 | \$22,321 | \$13,303,612 |
| All Others | 2,886 | 41.7% | 42.6 | 122,963 | \$11,337 | \$32,717,437 |
| Totals: | 6,921 | 100.0% | 39.4 | 272,351 | \$10,864 | \$75,187,522 |

Group of Industries Synopsis

(Based On Industry)

Top 5 Comparison – for Years: 2002 to 2007

Nature of Injury

Top 5 by Total LTC's

| Nature of Injury | 2002 | 2003 | 2004 | 2005 | 2006 | 2007 YTD | Totals |
|-----------------------------------|------|------|------|------|------|----------|--------|
| Sprains/Strain | 393 | 484 | 443 | 516 | 519 | 171 | 2,526 |
| Fracture/Dislocation/Nerve Damage | 202 | 248 | 243 | 295 | 261 | 84 | 1,333 |
| Superficial Wounds | 95 | 140 | 129 | 163 | 152 | 53 | 732 |
| Oth Traumatic Injuries | 68 | 85 | 71 | 92 | 99 | 41 | 456 |
| Open Wound | 65 | 98 | 75 | 98 | 80 | 26 | 442 |

| Nature of injury | Total LTC's (2002 to date) | Percentage of LTC's | Average Duration | Total TTD | Average LTC Costs | Total LTC Costs |
|-----------------------------------|----------------------------|---------------------|------------------|----------------|-------------------|---------------------|
| Sprains/Strain | 2,526 | 36.5% | 35.5 | 89,641 | \$7,230 | \$18,263,586 |
| Fracture/Dislocation/Nerve Damage | 1,333 | 19.3% | 58.9 | 78,514 | \$14,147 | \$18,858,596 |
| Superficial Wounds | 732 | 10.6% | 23.7 | 17,319 | \$5,172 | \$3,785,604 |
| Oth Traumatic Injuries | 456 | 6.6% | 43.1 | 19,671 | \$15,973 | \$7,283,497 |
| Open Wound | 442 | 6.4% | 28.5 | 12,613 | \$8,651 | \$3,823,547 |
| All Others | 1,432 | 20.7% | 38.1 | 54,593 | \$16,182 | \$23,172,693 |
| Totals: | 6,921 | 100.0% | 39.4 | 272,351 | \$10,864 | \$75,187,522 |

(Based On Industry)

Appendix A

| Type of Accident | Part of Body | Nature of Injury |
|------------------------------------|--------------------------|-------------------------------------|
| Assaults/Violent Acts/Harassment | Abdomen | Abnormal Symptoms/Conditions |
| Bodily Reaction and Exertion | Arms | Burns |
| Contact with Objects and Equipment | Back | Cancers/Tumors |
| Exposure to Extreme Temperature | Body System(s) | Dermatitis |
| Exposure to Harmful Substances | Chest/Shoulder(s) | Ear/Hearing Condition |
| Exposure to Noise | Ear(s) | Environmental Condition |
| Falls | Eye(s) | Eye/Vision Conditions |
| Fires and Explosions | Fingers | Fracture/Dislocation/Nerve Damage |
| Highway/Non-Highway M.V. Accident | Foot(Feet)/Ank(s)/Toe(s) | Heart/Circulatory Diseases |
| NOT YET | Hand(s)/Wrist(s) | Infectious Diseases |
| Oth Events or Exposure | Head | Inflammations of Joints/Muscles |
| Oth Vehicle Accident | Hip/Pelvis | Intracranial Injures |
| Overexertion | Knee(s) | Mental Diseases |
| RMI | Legs | Multiple Diseases/Disorders |
| Rubbed or Abraded | Multiple Parts | Multiple Trauma Injuries |
| Slip | Neck | Non-personal Damage |
| Struck against Object | Non-Personal Damage | NOT YET |
| Struck by Object | NOT YET | Open Wound |
| | Trunk | Oth Diseases/Conditions |
| | Unclassified | Oth System Diseases |
| | | Oth Traumatic Injuries |
| | | Peripheral Nerve Dmg/Carpal Tunnel |
| | | Pneumoconiosis Including Asbestosis |
| | | Sprains/Strain |
| | | Superficial Wounds |
| | | Unclassified |

NOTE: Type NOT YET indicates that coding was not available