

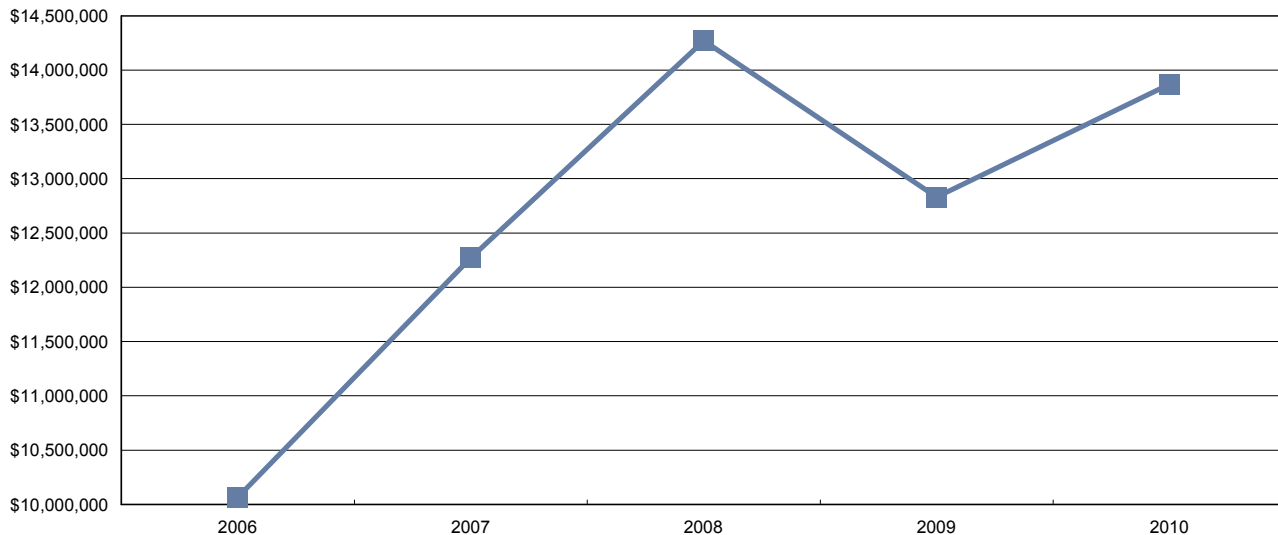
Funded Safety Association Synopsis

Choosing a specific Funded Safety Association from a list will allow you to examine the combined claims and financial history of all companies associated with it.

Insurable Earnings and Premiums – for Years: 2006 to 2010

Rate Year	Number of Employers with Insurable Earnings	Newly Opened Accounts	Total Insurable Earnings	Total Workers	Total Premium
2006	43185	3413	\$10,067,849,670	246,400	\$288,746,448
2007	48242	3600	\$12,270,029,165	287,434	\$311,994,917
2008	50469	3512	\$14,271,377,791	318,500	\$316,948,000
2009	49600	3320	\$12,832,067,843	275,308	\$271,803,849
2010	49808	5051	\$13,870,710,847	296,284	\$325,726,051

Total Insurable Earnings (\$Thousands)



Distribution of Accounts By Insurable Earnings (\$Thousands*)

Rate Year	<= \$500,000		> \$500,000 and <= \$1 Million		> \$1 Million and <= \$5 Million		> \$5 Million and <= \$20 Million		> \$20 Million	
	Accts	Tot Ins Earn*	Accts	Tot Ins Earn*	Accts	Tot Ins Earn*	Accts	Tot Ins Earn*	Accts	Tot Ins Earn*
2006	40,287	\$2,372,871	1,297	\$915,948	1,329	\$2,701,556	227	\$2,194,931	45	\$1,882,543
2007	44,883	\$2,750,166	1,505	\$1,062,836	1,514	\$3,172,060	266	\$2,471,746	74	\$2,813,221
2008	46,914	\$2,920,824	1,560	\$1,092,547	1,597	\$3,305,671	303	\$2,858,461	95	\$4,093,875
2009	46,319	\$2,809,240	1,492	\$1,044,711	1,435	\$2,932,208	285	\$2,692,624	69	\$3,353,284
2010	46,414	\$2,861,304	1,549	\$1,084,954	1,467	\$3,004,208	293	\$2,838,153	85	\$4,082,092

Note: The current year insurable earnings is based on estimates

Funded Safety Association Synopsis

Funded Association:

Claim Costs – for Years: 2006 to 2011

Total Claims

Accident Year	Number of Claims	Claim Costs	Number of LTC Claims	Total LTC Claim Costs	TTD Days	Modified		
						Work Ever Performed Claims	Medical Aid Claims	Disabling Injury Claims
2006	14,254	\$51,966,199	6,088	\$47,223,585	201,955	7733	8,166	11769
2007	15,836	\$62,616,889	6,469	\$56,700,813	210,354	9171	9,367	12991
2008	15,775	\$64,683,988	5,785	\$57,409,348	181,442	10645	9,990	12672
2009	12,352	\$56,135,095	4,554	\$49,288,954	150,806	7236	7,798	9483
2010	11,646	\$57,943,991	4,313	\$51,462,773	151,587	6826	7,333	8973
2011 YTD	1,897	\$2,801,763	642	\$2,277,137	9,340	1022	1,255	1433

Duration Bands - Total LTC Claims

Accident Year	<= 5 Days	> 5 Days and <= 8 Days	> 8 Days and <= 30 Days	> 30 Days and <= 60 Days	> 60 Days	Total Lost Time Claims
2006	2,161	501	1,495	877	1,054	6,088
2007	2,324	598	1,577	829	1,141	6,469
2008	2,150	485	1,441	737	972	5,785
2009	1,699	354	1,084	596	821	4,554
2010	1,543	327	987	561	895	4,313
2011 YTD	244	59	238	93	8	642

Total Claims Costs

Accident Year	Compensation	Medical Aid	Rehabilitation	Economic Loss	Total
2006	\$22,993,047	\$24,558,189	\$987,160	\$3,427,803	\$51,966,199
2007	\$26,814,049	\$31,167,533	\$1,292,896	\$3,342,411	\$62,616,889
2008	\$25,176,050	\$31,579,739	\$1,784,840	\$6,143,360	\$64,683,988
2009	\$22,435,130	\$27,716,832	\$1,976,205	\$4,006,928	\$56,135,095
2010	\$22,261,735	\$29,566,706	\$2,266,574	\$3,848,976	\$57,943,991
2011 YTD	\$1,312,694	\$1,486,244	\$2,825	\$0	\$2,801,763

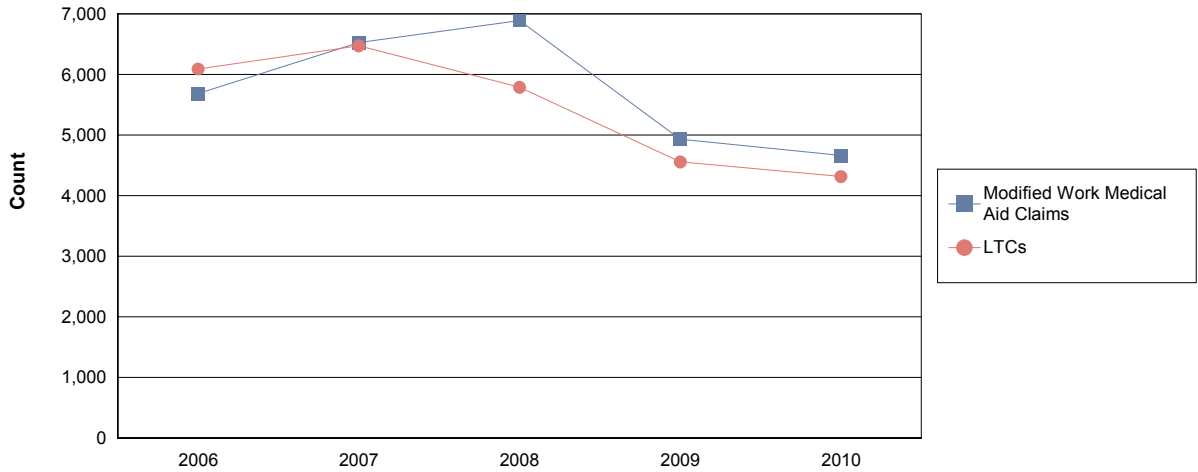
Most Expensive Lost Time Claims Analysis

Accident Year	LTC's > \$25,000	Percentage > \$25,000	Total Cost of LTC's > \$25,000	Percentage of Total Costs
2006	388	6.4%	\$19,780,746	41.9%
2007	505	7.8%	\$27,316,803	48.2%
2008	491	8.5%	\$29,128,110	50.7%
2009	466	10.2%	\$25,843,904	52.4%
2010	499	11.6%	\$28,481,747	55.3%
2011 YTD	6	0.9%	\$300,417	13.2%

Funded Association:

Claim Costs – for Years: 2006 to 2009

Disabling Claims Components



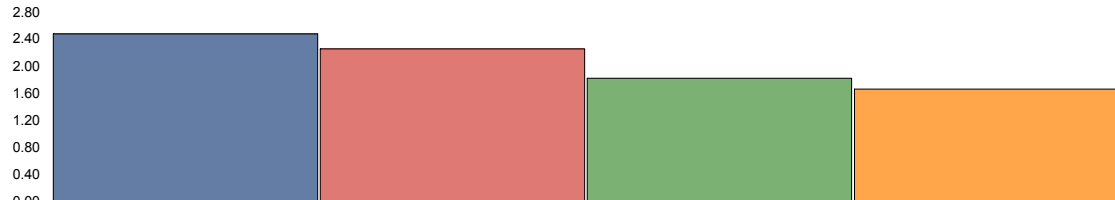
Disabling Claims include Lost Time Claims or Medical Aid Claims with Modified Work

Funded Safety Association Synopsis

Funded Association:

Claim Costs – for Years: 2006 to 2009

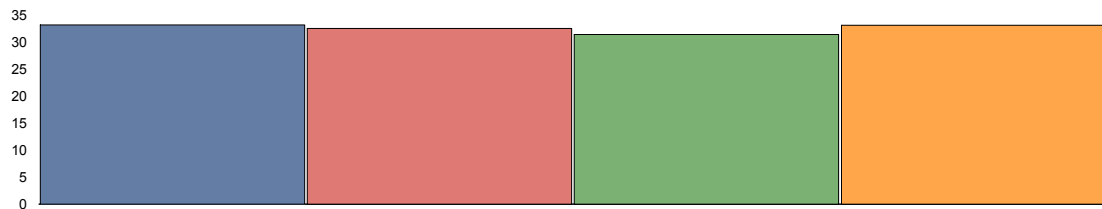
Frequency Rates (Lost Time Claims per 100 workers)



	2006	2007	2008	2009
Frequency Rate	2.47	2.25	1.82	1.65

Frequency Rate = (Total Lost Time Claims * 100) / (Person Years)
 Person Years = (Total Insurable Earnings) / (Avg Hourly Wage * 2000 Hours)

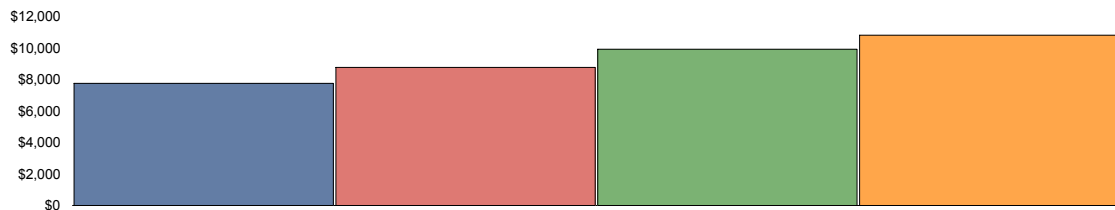
Severity Rates (Temporary Total Disability Days per Lost Time Claim)



	2006	2007	2008	2009
Severity Rate	33.17	32.52	31.36	33.12

Severity Rate = (Total TTD's) / (Total LTCs)

Average Cost Per LTC



	2006	2007	2008	2009
Avg Cost / Claim	\$7,756.83	\$8,765.00	\$9,923.83	\$10,823.22

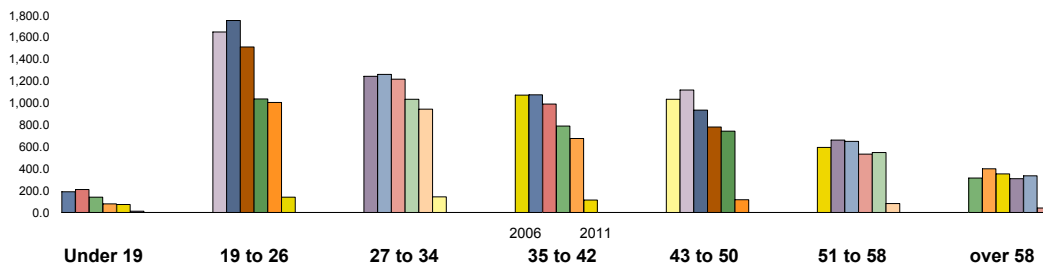
Average Cost Per LTC = (Total LTC Costs) / (Total LTCs)

Claims and Claims Costs are based on a 15 month transaction period. For example, for claims occurring in 2003, the transaction period would be from January 1, 2003 to March 31, 2004.

Funded Association:

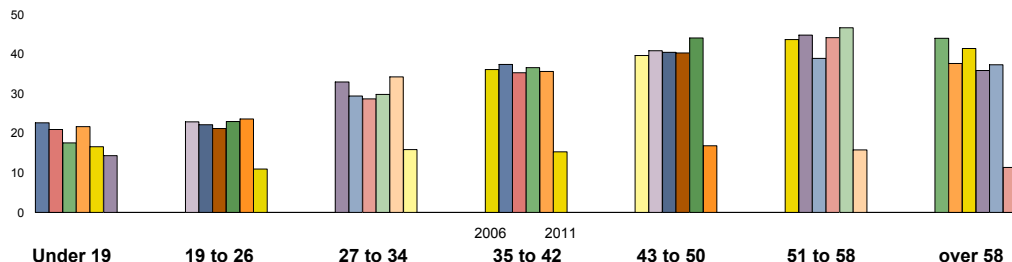
Injured Worker's Age – for Years: 2006 to 2011

Number of LTC's (by age of injured worker and by occurrence year)



	Under 19	19 to 26	27 to 34	35 to 42	43 to 50	51 to 58	over 58
2006	188	1,648	1,241	1,069	1,032	594	315
2007	209	1,751	1,260	1,074	1,116	661	398
2008	138	1,509	1,216	990	934	647	351
2009	79	1,035	1,032	787	780	532	309
2010	73	1,003	941	675	742	545	333
2011 YTD	10	139	141	114	117	80	41

Average Severity of a Claim Temporary Total Disability Days per Lost Time Claim (by age of injured worker and by occurrence year)



	Under 19	19 to 26	27 to 34	35 to 42	43 to 50	51 to 58	over 58
2006	22.64	22.86	32.93	36.06	39.59	43.64	43.93
2007	20.89	22.14	29.38	37.35	40.78	44.80	37.61
2008	17.54	21.13	28.66	35.25	40.39	38.88	41.36
2009	21.62	22.92	29.77	36.52	40.22	44.14	35.79
2010	16.59	23.61	34.22	35.57	44.07	46.59	37.24
2011 YTD	14.30	10.95	15.83	15.32	16.82	15.80	11.34

Note: LTC's with no birth date recorded are not included in band subtotals.

Funded Safety Association Synopsis

Funded Association:

Top 5 Comparison – for Years: 2006 to 2011

Type of Accident							
Top 5 by Total LTC's							
Type of Accident	2006	2007	2008	2009	2010	2011 YTD	Totals
Falls	1,320	1,392	1,286	1,069	1,011	188	6,266
Overexertion	978	1,070	1,047	900	730	93	4,818
Struck by Object	1,006	1,038	933	662	618	89	4,346
Bodily Reaction and Exertion	655	645	690	528	560	58	3,136
Contact with Objects and Equipment	337	393	411	304	297	43	1,785

Type of Accident	Total LTC's (2006 to date)	Percentage of LTC's	Average Duration	Total TTD	Average LTC Costs	Total LTC Costs
Falls	6,266	22.5%	47.5	297,787	\$13,450	\$84,275,953
Overexertion	4,818	17.3%	28.5	137,380	\$7,237	\$34,866,258
Struck by Object	4,346	15.6%	24.8	107,805	\$7,241	\$31,469,780
Bodily Reaction and Exertion	3,136	11.3%	30.0	94,197	\$7,699	\$24,145,287
Contact with Objects and Equipment	1,785	6.4%	31.9	56,976	\$10,211	\$18,226,284
All Others	7,500	26.9%	28.2	211,339	\$9,517	\$71,379,048
Totals:	27,851	100.0%	32.5	905,484	\$9,492	\$264,362,609

Part of Body							
Top 5 by Total LTC's							
Part of Body	2006	2007	2008	2009	2010	2011 YTD	Totals
Back	1,253	1,354	1,237	989	878	128	5,839
Foot(Feet)/Ank(s)/Toe(s)	746	769	706	466	506	84	3,277
Trunk	605	659	537	476	490	63	2,830
Hand(s)/Wrist(s)	533	601	528	406	395	57	2,520
Fingers	544	552	531	375	349	49	2,400

Part of Body	Total LTC's (2006 to date)	Percentage of LTC's	Average Duration	Total TTD	Average LTC Costs	Total LTC Costs
Back	5,839	21.0%	24.5	142,989	\$7,507	\$43,835,835
Foot(Feet)/Ank(s)/Toe(s)	3,277	11.8%	38.2	125,155	\$8,768	\$28,731,984
Trunk	2,830	10.2%	40.8	115,417	\$12,515	\$35,418,655
Hand(s)/Wrist(s)	2,520	9.0%	33.2	83,585	\$7,866	\$19,821,919
Fingers	2,400	8.6%	23.7	56,846	\$5,489	\$13,173,745
All Others	10,985	39.4%	34.7	381,492	\$11,232	\$123,380,471
Totals:	27,851	100.0%	32.5	905,484	\$9,492	\$264,362,609

Funded Safety Association Synopsis

Funded Association:

Top 5 Comparison – for Years: 2006 to 2011

Nature of Injury

Top 5 by Total LTC's

Nature of Injury	2006	2007	2008	2009	2010	2011 YTD	Totals
Sprains/Strain	2,485	2,604	2,470	2,051	1,866	268	11,744
Fracture/Dislocation/Nerve Damage	892	968	885	685	663	121	4,214
Open Wound	691	766	643	491	489	53	3,133
Superficial Wounds	655	676	677	449	474	71	3,002
Oth Traumatic Injuries	386	471	444	295	297	56	1,949

Nature of injury	Total LTC's (2006 to date)	Percentage of LTC's	Average Duration	Total TTD	Average LTC Costs	Total LTC Costs
Sprains/Strain	11,744	42.2%	28.9	339,592	\$7,491	\$87,975,684
Fracture/Dislocation/Nerve Damage	4,214	15.1%	62.1	261,803	\$17,527	\$73,859,186
Open Wound	3,133	11.2%	21.0	65,898	\$5,638	\$17,663,415
Superficial Wounds	3,002	10.8%	18.2	54,704	\$4,447	\$13,348,889
Oth Traumatic Injuries	1,949	7.0%	37.4	72,962	\$11,782	\$22,963,798
All Others	3,809	13.7%	29.0	110,525	\$12,747	\$48,551,639
Totals:	27,851	100.0%	32.5	905,484	\$9,492	\$264,362,609

Funded Association:

Appendix A

Type of Accident	Part of Body	Nature of Injury
Assaults/Violent Acts/Harassment	Abdomen	Abnormal Symptoms/Conditions
Bodily Reaction and Exertion	Arms	Burns
Contact with Objects and Equipment	Back	Cancers/Tumors
Exposure to Extreme Temperature	Body System(s)	Dermatitis
Exposure to Harmful Substances	Chest/Shoulder(s)	Ear/Hearing Condition
Exposure to Noise	Ear(s)	Environmental Condition
Falls	Eye(s)	Eye/Vision Conditions
Fires and Explosions	Fingers	Fracture/Dislocation/Nerve Damage
Highway/Non-Highway M.V. Accident	Foot(Feet)/Ank(s)/Toe(s)	Heart/Circulatory Diseases
NOT YET	Hand(s)/Wrist(s)	Infectious Diseases
Oth Events or Exposure	Head	Inflammations of Joints/Muscles
Oth Vehicle Accident	Hip/Pelvis	Intracranial Injures
Overexertion	Knee(s)	Mental Diseases
RMI	Legs	Multiple Diseases/Disorders
Rubbed or Abraded	Multiple Parts	Multiple Trauma Injuries
Slip	Neck	Non-personal Damage
Struck against Object	Non-Personal Damage	NOT YET
Struck by Object	NOT YET	Open Wound
	Trunk	Oth Diseases/Conditions
	Unclassified	Oth System Diseases
		Oth Traumatic Injuries
		Peripheral Nerve Dmg/Carpal Tunnel
		Pneumoconiosis Including Asbestosis
		Sprains/Strain
		Superficial Wounds
		Unclassified

NOTE: Type NOT YET indicates that coding was not available

Funded Safety Association Synopsis



Workers'
Compensation
Board

Alberta

Funded
Association:

Industry	Industry Description
2100	LANDSCAPING
2200	RIGHT-OF-WAY MAINTENANCE
30302	OVERHEAD DOOR INSTALL / REPAIR
31508	OVERHEAD CRANES - SERVICE ONLY
34800	TRANSIT MIX OPERATIONS
40400	CONSTRUCTION, INDUSTRIAL
40401	CONSTRUCTION TRADE SVCS - NEC
40405	RESIDENTIAL GENERAL CONTRACTOR
40602	PAVING & SURFACING
40604	MOBILE EQUIPMENT OPERATION
40901	POWER/PHONE LINE-CONST/REMOVE
40905	PIPELINE CONSTRUCTION
42102	BRICK/MASONRY CONTRACTING
42103	DRILLING, HORIZONTAL/ANGULAR
42104	CONCRETE CONSTRUCTION
42105	ERECT STEEL/METAL STRUCTURES
42106	ERECT STRUCTURAL STEEL
42109	HEAVY EQUIP/MACHINE INSTAL/SVC
42110	ELEVATORS/ESCALATORS-SVCE/INSTALL
42111	PAINTING & DECORATING
42113	TILE & TERRAZZO, SELL/INSTALL
42117	HEATING SYSTEMS-FAB/INSTALL
42118	ROOFING
42120	SAND BLASTING
42121	DOORS/WINDOWS MFG/INSTALL
42122	MECHANICAL CONTRACTING
42124	ELECTRIC WIRING
42125	FLOOR COVERING SALES & INSTALLATION
42129	INDUSTRIAL PLANT MAINTENANCE
42133	CABINETS/COUNTERS, ASMB/INSTALL
42135	DRYWALL,LATH,PLASTER, STUCCO, ETC.
42139	INDUSTRIAL COATING SERVICES
42141	ACOUSTIC MATERIALS, SELL/INSTALL
42143	FRAMING CONTRACTOR - CONST
42144	FIRE SPRINKERS - INSTALL/SVCE
42147	FINISHING CARPENTRY
42151	SIDING,EAVESTROUGH - FAB./INST.
42155	MOVE BUILDINGS
42156	ERECT/DISMANTLE STORAGE TANKS
42159	CAISSON OPERATIONS
42161	ERECT PRECAST CONCRETE
42184	MECHANICAL INSULATION-INSTALL/SVCE
51504	CATHODIC PROTECTION SERVICES
62302	MACH/EQUIP, NEC-SALES/SVCE
86911	STAFFING SERVICES - LABOUR
89401	WELDING
89600	REFRIGERATION EQUIP.SALES/SVC
89605	SERVICE STATION EQUIP SALES/SVC
89928	RENT/ERECT-SCAFFOLD/CRANES