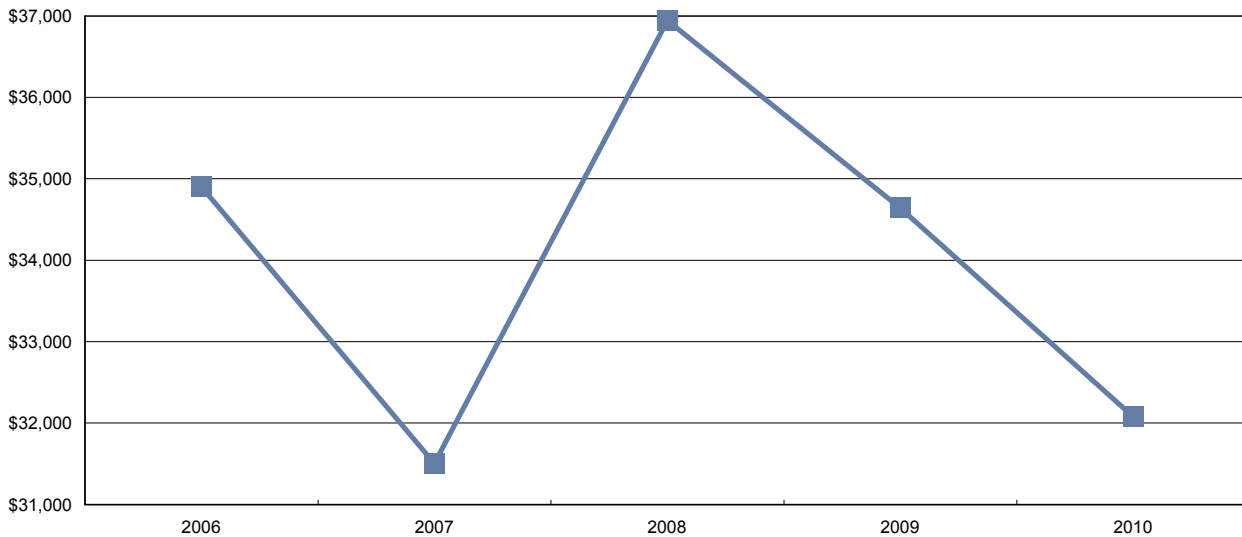


Account/Industry Synopsis

This report provides you with information on your company's claims and financial history. Reviewing detailed injury information can help you identify possible safety issues within your company, while the demographic information can help you determine the target group for your safety initiative efforts.

Rate Year	Total Insurable Earnings	Total Workers	Total Premium
2006	\$34,901,012	751	\$275,718
2007	\$31,505,653	618	\$170,130
2008	\$36,945,465	708	\$210,589
2009	\$34,643,188	591	\$183,609
2010	\$32,076,201	963	\$282,271

Total Insurable Earnings (\$Thousands)



Account/Industry Synopsis

Account:

Industry:

Claim Costs – for Years: 2006 to 2011

Total Claims

Accident Year	Number of Claims	Claim Costs	Number of LTC Claims	Total LTC Claim Costs	TTD Days	Modified Work Ever Performed Claims	Medical Aid Claims	Disabling Injury Claims
2006	33	\$35,632	9	\$19,785	37	25	24	28
2007	37	\$39,267	5	\$19,171	17	30	32	34
2008	50	\$65,131	4	\$26,934	30	45	46	45
2009	40	\$40,291	2	\$11,965	13	29	38	29
2010	36	\$59,632	3	\$32,143	14	23	33	23
2011 YTD	9	\$4,481	0	\$0	0	6	9	6

Duration Bands - Total LTC Claims

Accident Year	<= 5 Days	> 5 Days and <= 8 Days	> 8 Days and <= 30 Days	> 30 Days and <= 60 Days	> 60 Days	Total Lost Time Claims
2006	8	0	1	0	0	9
2007	4	0	1	0	0	5
2008	2	0	2	0	0	4
2009	1	1	0	0	0	2
2010	2	0	1	0	0	3
YTD						

Total Claims Costs

Accident Year	Compensation	Medical Aid	Rehabilitation	Economic Loss	Total
2006	\$5,700	\$29,932	\$0	\$0	\$35,632
2007	\$2,952	\$36,315	\$0	\$0	\$39,267
2008	\$6,659	\$58,472	\$0	\$0	\$65,131
2009	\$2,283	\$38,007	\$0	\$0	\$40,291
2010	\$10,386	\$49,247	\$0	\$0	\$59,632
2011 YTD	\$0	\$4,481	\$0	\$0	\$4,481

Most Expensive Lost Time Claims Analysis

Accident Year	LTC's > \$25,000	Percentage > \$25,000	Total Cost of LTC's > \$25,000	Percentage of Total Costs
2006	0	0.0%	\$0	0.0%
2007	0	0.0%	\$0	0.0%
2008	0	0.0%	\$0	0.0%
2009	0	0.0%	\$0	0.0%
2010	0	0.0%	\$0	0.0%
2011 YTD	0	0.0%	\$0	0.0%

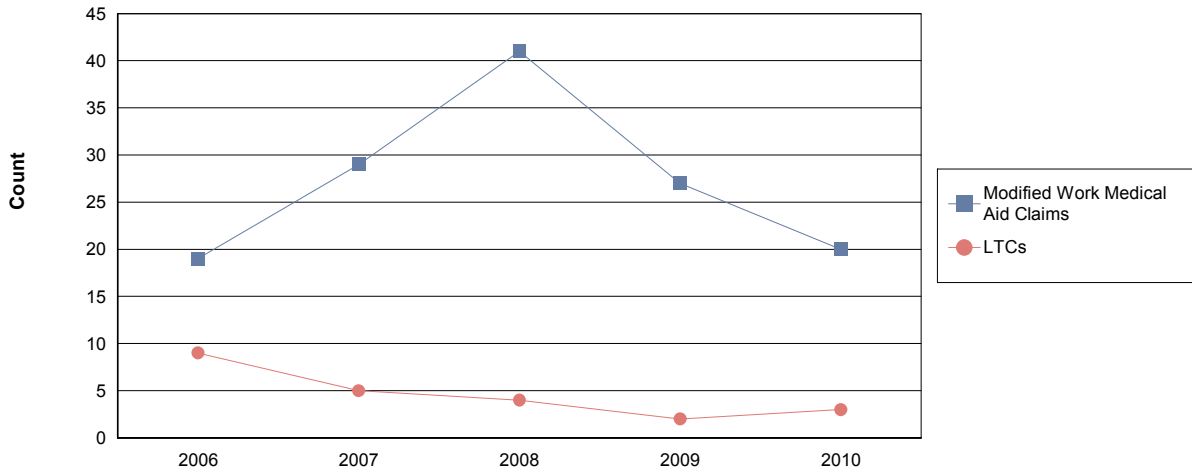
Account/Industry Synopsis

Account:

Industry:

Claim Costs – for Years: 2006 to 2009

Disabling Claims Components



Disabling Claims include Lost Time Claims or Medical Aid Claims with Modified Work

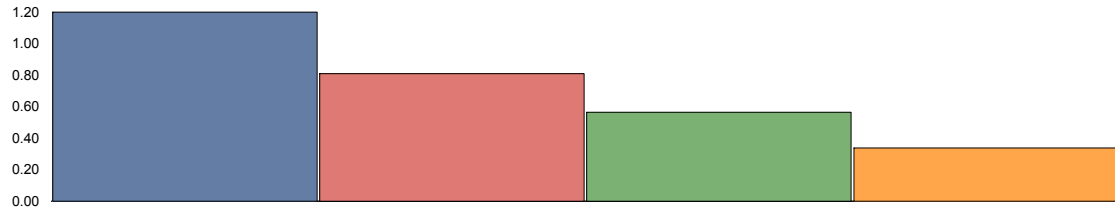
Account/Industry Synopsis

Account:

Industry:

Claim Costs – for Years: 2006 to 2009

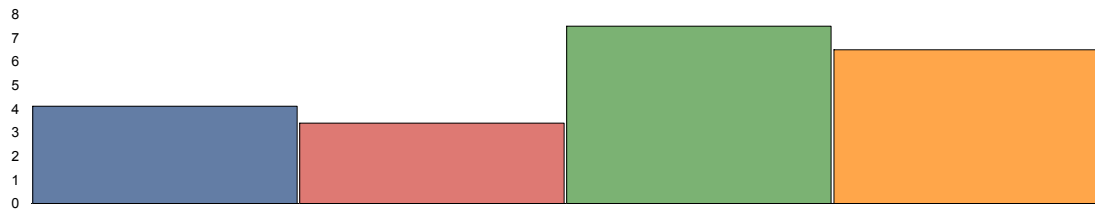
Frequency Rates (Lost Time Claims per 100 workers)



	2006	2007	2008	2009
Frequency Rate	1.20	0.81	0.57	0.34

Frequency Rate = (Total Lost Time Claims * 100) / (Person Years)
 Person Years = (Total Insurable Earnings) / (Avg Hourly Wage * 2000 Hours)

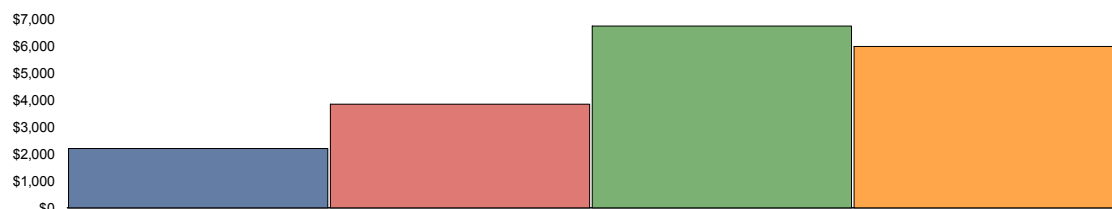
Severity Rates (Temporary Total Disability Days per Lost Time Claim)



	2006	2007	2008	2009
Severity Rate	4.11	3.40	7.50	6.50

Severity Rate = (Total TTD's) / (Total LTCs)

Average Cost Per LTC



	2006	2007	2008	2009
Avg Cost / Claim	\$2,198.36	\$3,834.30	\$6,733.39	\$5,982.59

Average Cost Per LTC = (Total LTC Costs) / (Total LTCs)

Account/Industry Synopsis



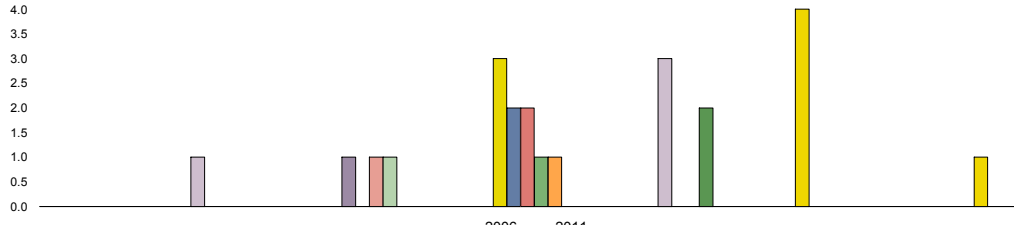
Workers' Compensation Board
Alberta

Account:

Industry:

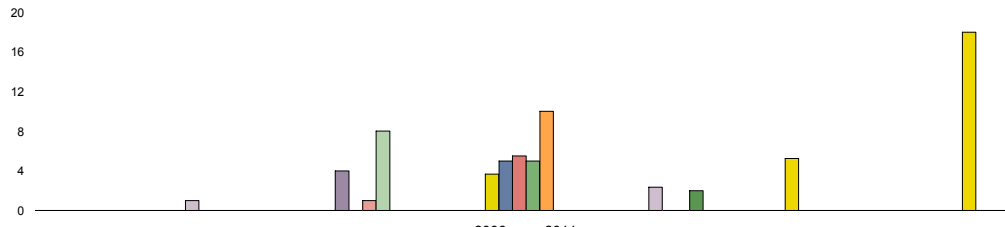
Injured Worker's Age – for Years: 2006 to 2011

Number of LTC's (by age of injured worker and by occurrence year)



	Under 19	19 to 26	27 to 34	35 to 42	43 to 50	51 to 58	over 58
2006	0	1	1	3	0	4	0
2007	0	0	0	2	3	0	0
2008	0	0	1	2	0	0	1
2009	0	0	1	1	0	0	0
2010	0	0	0	1	2	0	0
2011 YTD	0	0	0	0	0	0	0

Average Severity of a Claim Temporary Total Disability Days per Lost Time Claim (by age of injured worker and by occurrence year)



	Under 19	19 to 26	27 to 34	35 to 42	43 to 50	51 to 58	over 58
2006	0.00	1.00	4.00	3.67	0.00	5.25	0.00
2007	0.00	0.00	0.00	5.00	2.33	0.00	0.00
2008	0.00	0.00	1.00	5.50	0.00	0.00	18.00
2009	0.00	0.00	8.00	5.00	0.00	0.00	0.00
2010	0.00	0.00	0.00	10.00	2.00	0.00	0.00
2011 YTD	0.00	0.00	0.00	0.00	0.00	0.00	0.00

Note: LTC's with no birth date recorded are not included in band subtotals.

Account/Industry Synopsis

Account:

Industry:

Top 5 Comparison – for Years: 2006 to 2011

Type of Accident

Top 5 by Total LTC's

Type of Accident	2006	2007	2008	2009	2010	2011 YTD	Totals
Overexertion	5	0	0	1	0	0	6
Rubbed or Abraded	1	2	1	0	0	0	4
Bodily Reaction and Exertion	1	1	1	0	0	0	3
Contact with Objects and Equipment	1	0	0	0	1	0	2
Exposure to Harmful Substances	0	1	0	1	0	0	2

Type of Accident	Total LTC's (2006 to date)	Percentage of LTC's	Average Duration	Total TTD	Average LTC Costs	Total LTC Costs
Overexertion	6	26.1%	3.0	18	\$3,615	\$21,690
Rubbed or Abraded	4	17.4%	1.8	7	\$1,218	\$4,872
Bodily Reaction and Exertion	3	13.0%	5.3	16	\$4,017	\$12,051
Contact with Objects and Equipment	2	8.7%	7.5	15	\$6,012	\$12,025
Exposure to Harmful Substances	2	8.7%	4.5	9	\$853	\$1,705
All Others	6	26.1%	7.7	46	\$9,609	\$57,655
Totals:	23	100.0%	4.8	111	\$4,783	\$109,998

Part of Body

Top 5 by Total LTC's

Part of Body	2006	2007	2008	2009	2010	2011 YTD	Totals
Eye(s)	0	3	1	0	1	0	5
Back	3	0	1	0	0	0	4
Fingers	2	0	0	0	1	0	3
Hand(s)/Wrist(s)	2	1	0	0	0	0	3
Knee(s)	1	0	2	0	0	0	3

Part of Body	Total LTC's (2006 to date)	Percentage of LTC's	Average Duration	Total TTD	Average LTC Costs	Total LTC Costs
Eye(s)	5	21.7%	1.0	5	\$3,661	\$18,307
Back	4	17.4%	2.5	10	\$1,530	\$6,119
Fingers	3	13.0%	5.3	16	\$4,189	\$12,566
Hand(s)/Wrist(s)	3	13.0%	8.7	26	\$4,792	\$14,375
Knee(s)	3	13.0%	10.7	32	\$8,764	\$26,292
All Others	5	21.7%	4.4	22	\$6,468	\$32,340
Totals:	23	100.0%	4.8	111	\$4,783	\$109,998

Account/Industry Synopsis



Workers'
Compensation
Board

Alberta

Account:

Industry:

Top 5 Comparison – for Years: 2006 to 2011

Nature of Injury

Top 5 by Total LTC's

Nature of Injury	2006	2007	2008	2009	2010	2011	YTD	Totals
Sprains/Strain	4	0	2	1	1		0	8
Fracture/Dislocation/Nerve Damage	3	0	0	0	1		0	4
Multiple Trauma Injuries	0	1	1	0	1		0	3
Superficial Wounds	0	2	1	0	0		0	3
Burns	0	2	0	0	0		0	2

Nature of injury	Total LTC's (2006 to date)	Percentage of LTC's	Average Duration	Total TTD	Average LTC Costs	Total LTC Costs
Sprains/Strain	8	34.8%	4.8	38	\$5,127	\$41,018
Fracture/Dislocation/Nerve Damage	4	17.4%	5.3	21	\$3,503	\$14,013
Multiple Trauma Injuries	3	13.0%	7.3	22	\$12,211	\$36,634
Superficial Wounds	3	13.0%	1.3	4	\$864	\$2,591
Burns	2	8.7%	5.0	10	\$5,037	\$10,074
All Others	3	13.0%	5.3	16	\$1,889	\$5,668
Totals:	23	100.0%	4.8	111	\$4,783	\$109,998

Account/Industry Synopsis

Account:

Industry:

Appendix A

Type of Accident	Part of Body	Nature of Injury
Assaults/Violent Acts/Harassment	Abdomen	Abnormal Symptoms/Conditions
Bodily Reaction and Exertion	Arms	Burns
Contact with Objects and Equipment	Back	Cancers/Tumors
Exposure to Extreme Temperature	Body System(s)	Dermatitis
Exposure to Harmful Substances	Chest/Shoulder(s)	Ear/Hearing Condition
Exposure to Noise	Ear(s)	Environmental Condition
Falls	Eye(s)	Eye/Vision Conditions
Fires and Explosions	Fingers	Fracture/Dislocation/Nerve Damage
Highway/Non-Highway M.V. Accident	Foot(Feet)/Ank(s)/Toe(s)	Heart/Circulatory Diseases
NOT YET	Hand(s)/Wrist(s)	Infectious Diseases
Oth Events or Exposure	Head	Inflammations of Joints/Muscles
Oth Vehicle Accident	Hip/Pelvis	Intracranial Injures
Overexertion	Knee(s)	Mental Diseases
RMI	Legs	Multiple Diseases/Disorders
Rubbed or Abraded	Multiple Parts	Multiple Trauma Injuries
Slip	Neck	Non-personal Damage
Struck against Object	Non-Personal Damage	NOT YET
Struck by Object	NOT YET	Open Wound
	Trunk	Oth Diseases/Conditions
	Unclassified	Oth System Diseases
		Oth Traumatic Injuries
		Peripheral Nerve Dmg/Carpal Tunnel
		Pneumoconiosis Including Asbestosis
		Sprains/Strain
		Superficial Wounds
		Unclassified

NOTE: Type NOT YET indicates that coding was not available